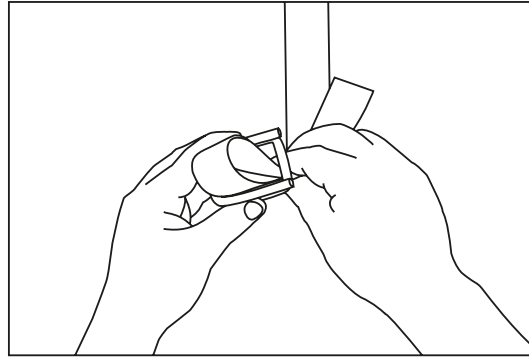
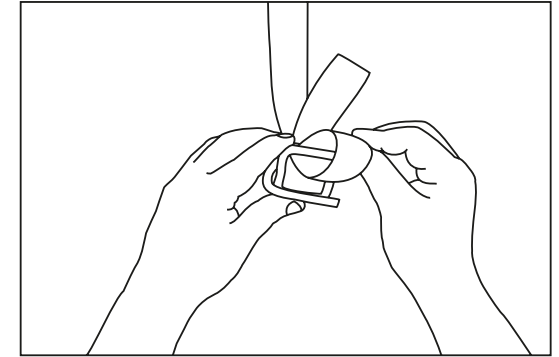


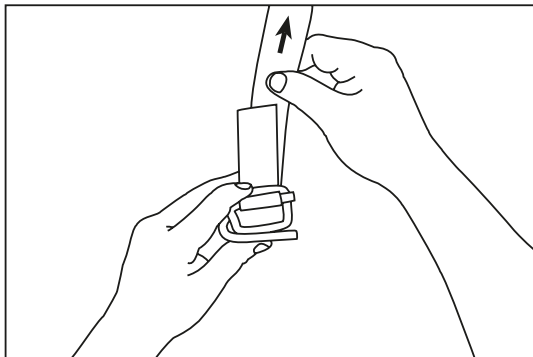
1 Feed strap under load before threading buckle. Fold tail of strap and form loop. Hold buckle with legs on top and pointing right.



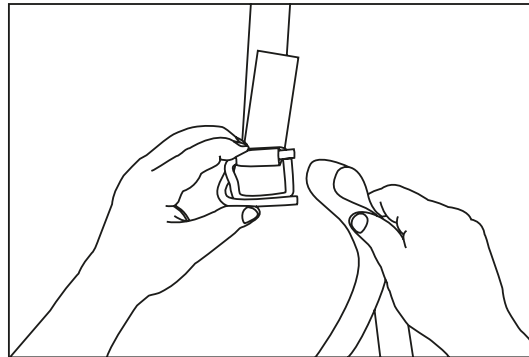
2 From underneath, insert loop through center of buckle.



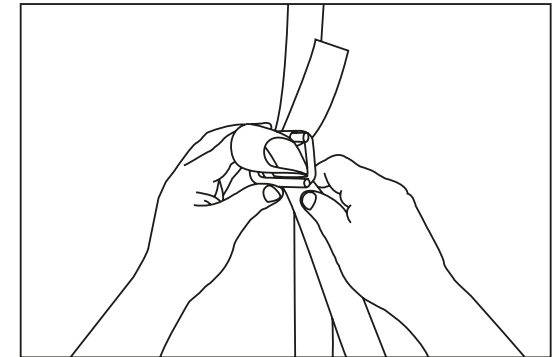
3 Pull loop over back leg of buckle.



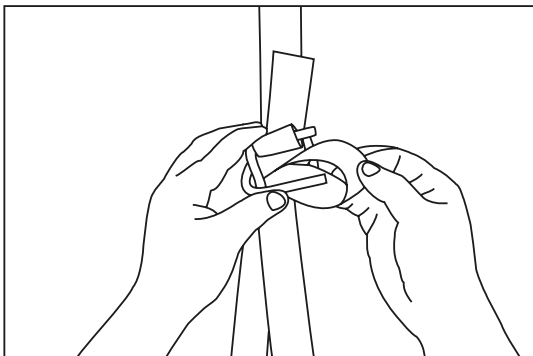
4 Pull strap, not tail end, to cinch loop tight.



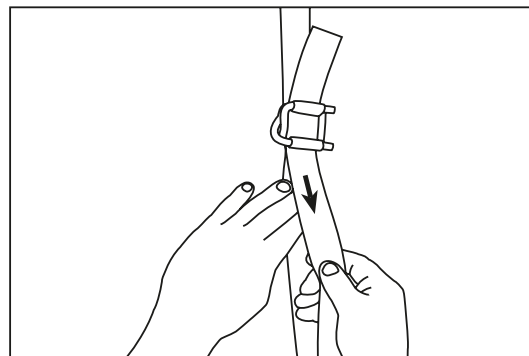
5 Remove excess slack under load and then fold a section of strap to form a loop.



6 From underneath, insert loop through buckle.



7 Pull loop over front leg of buckle.



8 Brace strap and pull tail to cinch loop and to remove any excess slack.

REDBACK[®]
LOAD RESTRAINT SYSTEMS



1.866.455.1345

www.redback-industries.com

Copyright © 2010 All Rights Reserved
Redback Industries, LLC