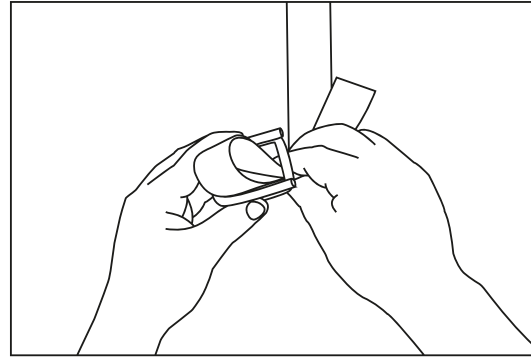
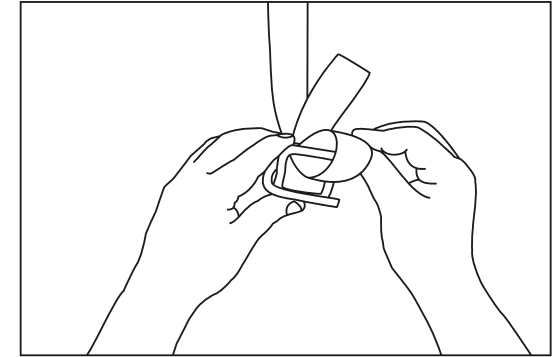


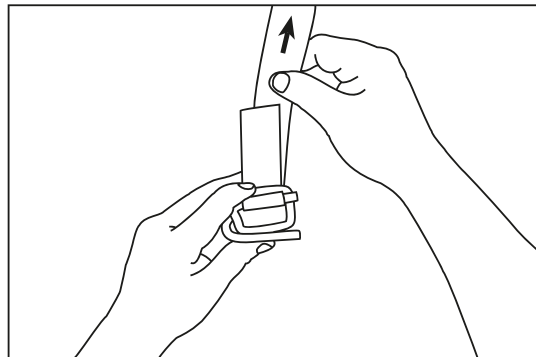
**1** Feed strap under load before threading buckle. Fold tail of strap and form loop. Hold buckle with legs on top and pointing right.



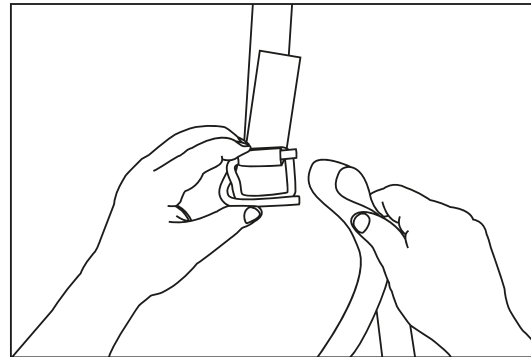
**2** From underneath, insert loop through center of buckle.



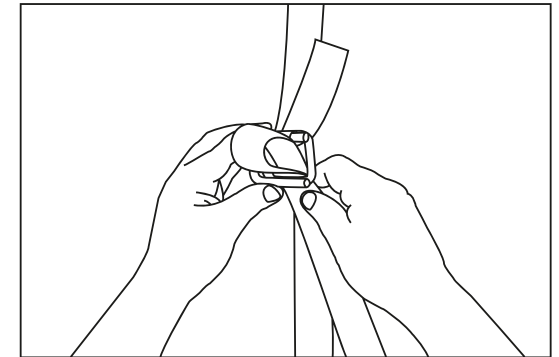
**3** Pull loop over back leg of buckle.



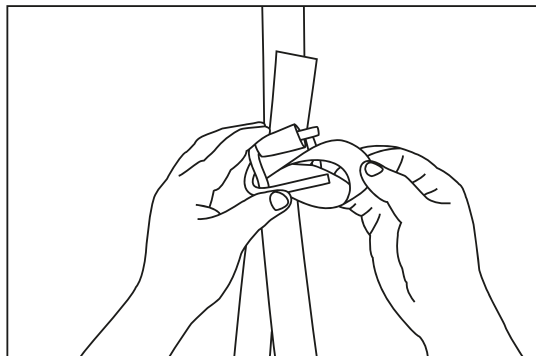
**4** Pull strap, not tail end, to cinch loop tight.



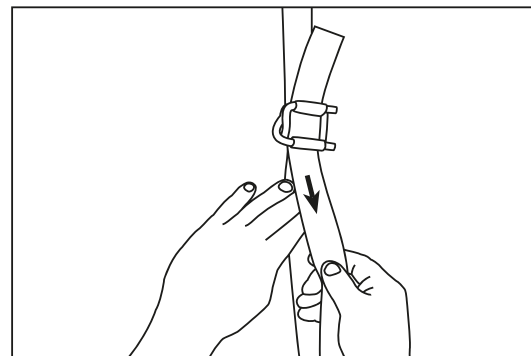
**5** Remove excess slack under load and then fold a section of strap to form a loop.



**6** From underneath, insert loop through buckle.



**7** Pull loop over front leg of buckle.



**8** Brace strap and pull tail to cinch loop and to remove any excess slack.

**REDBACK**<sup>®</sup>  
LOAD RESTRAINT SYSTEMS



T: 425.455.9200 1.866.455.1345 F: 425.455.1750  
[www.REDBACK.com](http://www.REDBACK.com)

Copyright ©2017 All Rights Reserved  
Redback Industries, LLC